

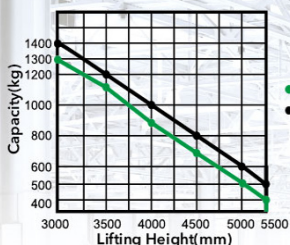
CQDH13/14-850

1.3/1.4 Ton Scissor Stacker

24 YEARS

TOP1 FORKLIFT MANUFACTURER AND SALER
IN CHINA FOR CONSECUTIVE 24 YEARS

Load Curve



Advantages

Configuration and Performance

- Electronic power steering system, light and low noise.
- Two-way magnetic valve, three drop speed mode.
- AC Driving system, No carbon brush, maintenance free.
- USA CURTIS driving controller.
- Electromagnetic, regenerative braking system.
- Lifting, reach, regenerative limit, motor and battery life extension.
- Equipped with double oil cylinder, fork tilt more smoothly.
- Standard moon walk. Handle at any angle, the vehicle goes straight.

Safety

- Curve automatic deceleration devices, more safe.
- Stepless speed control system, safe and quiet.
- Controller with Multiple automatic protection.
- Emergency reversing device/Emergency brake switch.
- High position automatic reduction device.



AC | EPS Moon Walk

Down mode at 3 speeds

Type	Lift height (mm)	Outside width between forks (mm)	Inside width between forks (mm)
CQDH13-850	3800/4000/4500/5000/5500	1270/1420/1470	1070/1220/1270
CQDH14-850	3800/4000/4500/5000/5500	1270/1420/1470	1070/1220/1270

Feature			
Model		CQDH13	CQDH14
Configuration No.		850	850
Type		Reach(Tilt,Side shifter)	Reach(Tilt)
Mast type		Standard 3-Stage	Standard 3-Stage
Load capacity	kg	1300	1400
Load center	mm	500	500
Wheel base	mm	1478	1478
Operating type		Walkie	Walkie
Wheels			
Wheels type		PU	PU
Wheel quantity/Driving wheel/ Balance wheel/Bearing wheel		1/4	1/4
Dimension			
Reach distance	mm	0-550	0-550
Standard lift height	mm	3800/4000/4500/5000/5500	3800/4000/4500/5000/5500
Max.extend height	mm	4991/5191/5691/6191/6691	4991/5191/5691/6191/6691
Mast lowered height	mm	1914/2081/2248/2415/2582	1914/2081/2248/2415/2582
Lowered fork height	mm	55	55
Fork size(length/width/thickness)	mm	1070/100/40	1070/100/40
Overall length	mm	2225	2225
Overall width	mm	1430	1430
Outside width between forks	mm	200-755	200-755
Distance shift fork side	mm	150	-
Tilt of fork(F/B)	mm	4/3	4/3
Min.Turning radius		1566	1566
Min.Aisle width for pallets 800×1200	km/h	2135	2135
Min.Aisle width for pallets 1000×1200	mm/s	2315	2315
Min.ground clearance	mm/s	30	30
Performance			
Travel speed,laden/unladen		3.5/4	3.5/4
Lift speed,laden/unladen	kW	130/230	130/230
Lowering speed,laden/unladen	V	130/230	130/230
Gradeability,laden/unladen	Ah	3/5	3/5
Electrical configuration			
Drive motor/Lift motor/Steering motor		AC1.5/DC3.0/DC0.15	AC1.5/DC3.0/DC0.15
Battery voltage		24	24
Battery capacity	kg	345 (Options:FAAM345)	345 (Options:FAAM345)
Brake	kg	Electromagnetic/Regenerative	Electromagnetic/Regenerative
Controller		CURTIS	CURTIS
Weight			
Battery weight		300	300
Service weight with battery		2420	2400

* Details of specifications and equipment are based on information available at time of printing and may change without notice.



ANHUI HELI INDUSTRIAL VEHICLE IMP. AND EXP. CO., LTD.

ADD: 668 FANGXING ROAD, HEFEI, ANHUI, CHINA
TEL : +8655163639068
FAX : +8655163639966
Email : heli@helichina.net
WEBSITE : WWW.HELICHINA.COM / WWW.HELICHINA.NET